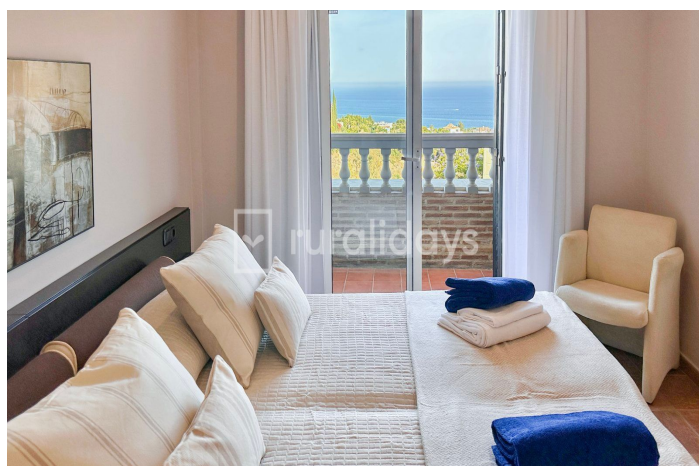
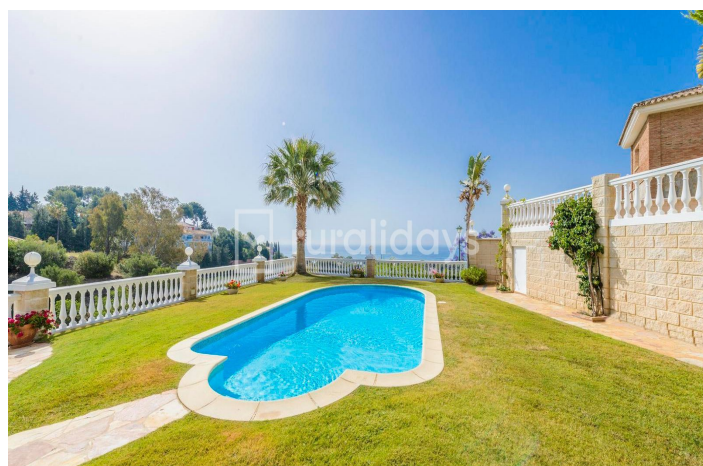
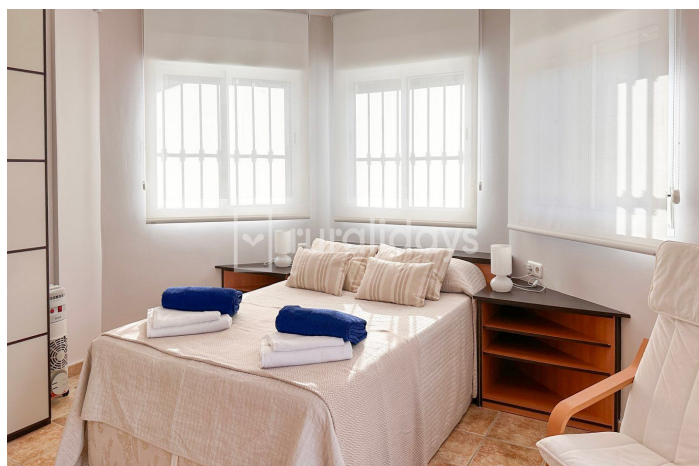




Detached Villa for sale in Benalmadena Costa, Benalmádena

1,300,000 €

Reference: R5103808 Bedrooms: 6 Bathrooms: 7 Plot Size: 800m² Build Size: 413m²





Costa del Sol, Benalmadena Costa

Nestled in the hills of Benalmádena, this refined three-level villa offers a unique blend of comfort, space, and spectacular coastal living—perfect for those seeking a serene retreat or a luxurious holiday escape on the Costa del Sol. The main level welcomes you with an expansive and light-filled living and dining area, framed by large windows that open onto views of lush gardens and the Mediterranean Sea. A cozy fireplace and stylish seating invite relaxation, while the fully equipped, separate kitchen caters to culinary enthusiasts. This floor also includes a guest bathroom and a spacious double bedroom with walk-in wardrobe and a private en-suite featuring a Jacuzzi. Upstairs, the master suite boasts a double bed, dressing area, and a luxurious en-suite with Jacuzzi. Two additional bedrooms—one double and one with twin beds—share a modern bathroom with a walk-in shower, ideal for family or guests. The lower level, which also has its own private entrance, features two additional lounges, a compact kitchen, guest WC, a shared bathroom with shower, and two bedrooms—one with a double bed and en-suite Jacuzzi, the other with twin beds. This self-contained space offers excellent flexibility for extended family or visitors. Comfort is ensured year-round with climate control throughout the entire villa. Outdoors, the home truly shines. From the terraces and the private garden, you'll enjoy sweeping views of the sea. The pool area is surrounded by greenery and includes an outdoor shower and an additional bathroom for added convenience. Access to the property is fully paved, ensuring both comfort and privacy in a highly desirable location.



Features:

Features

Near Transport
Private Terrace
Satellite TV
Storage Room
Ensuite Bathroom
Double Glazing
WiFi
Barbeque
Fiber Optic

Views

Sea
Panoramic
Country
Pool

Pool

Private
Garden
Private

Utilities

Electricity
Drinkable Water
Telephone

Orientation

South East

Setting

Close To Golf
Close To Port
Close To Town
Close To Schools

Furniture

Fully Furnished

Security

Alarm System
Entry Phone

Climate Control

Air Conditioning
Central Heating

Condition

Renovation Required

Kitchen

Partially Fitted

Parking

Private
More Than One