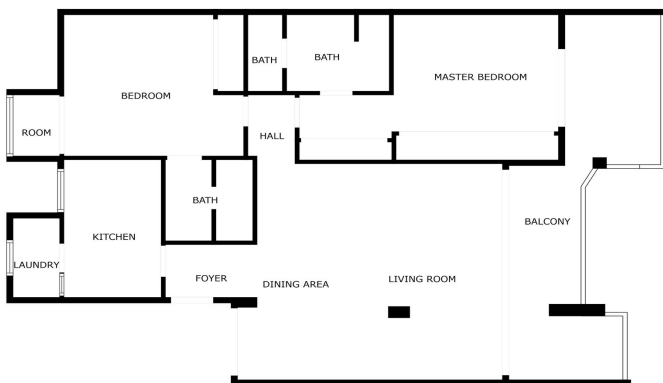




Ground Floor Apartment for sale in Marbella, Marbella

949,000 €

Reference: R5063005 Bedrooms: 2 Bathrooms: 2 Build Size: 119m²



SIZES ARE APPROXIMATE, ACTUAL MAY VARY.





Costa del Sol, Marbella

Discover this lovely bohemian-style apartment located on the first floor of one of the most prestigious and sought-after beachfront developments in Puerto Banús. This exclusive community, originally designed by renowned architect Melvin Villaroel, combines a bohemian and relaxed atmosphere similar to Marina Puente Romano, surrounded by lush tropical gardens and carefully maintained vegetation that creates a unique and welcoming environment. The development offers 24-hour security with concierge service, heated indoor pool, jacuzzi, sauna, gym, and a charming restaurant with bar, creating a true oasis by the Mediterranean. The south-facing apartment ensures abundant natural light throughout the day. Its spacious terrace, featuring a custom-made bench, offers open views of the beautiful communal gardens, in one of the most attractive areas of the complex, surrounded by palm trees and mature vegetation. The living room is bright and cozy, thanks to its large floor-to-ceiling windows that frame the green views and allow light to flow throughout the space. The property is presented in its original state but has been carefully maintained. It is distributed in a spacious living-dining room, two bedrooms, two bathrooms (the main one en suite with direct access to the terrace), and a fully equipped kitchen with a laundry room. The development also offers satellite television, parking facilities, marble floors, and air conditioning, ensuring maximum comfort. This property is not only ideal as a residence but also as a 5-star investment, having demonstrated a solid source of rental income.



Features:

Features

- Near Transport
- Private Terrace
- Satellite TV
- Storage Room
- Ensuite Bathroom
- Double Glazing
- Fitted Wardrobes
- Utility Room
- Near Church
- Fiber Optic

Setting

- Beachside
- Close To Golf
- Close To Port
- Close To Shops
- Close To Town
- Close To Schools

Climate Control

- Air Conditioning

Views

- Garden