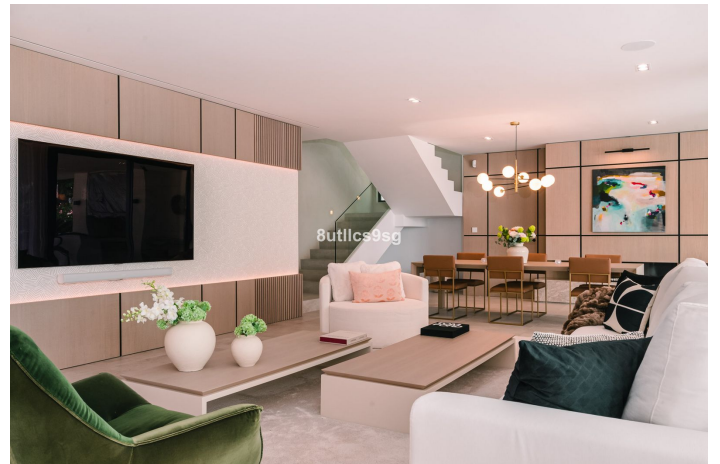




## Detached Villa for sale in Nueva Andalucía, Marbella

4,995,000 €

Reference: R4922260 Bedrooms: 5 Bathrooms: 5 Plot Size: 1,142m<sup>2</sup> Build Size: 844m<sup>2</sup> Terrace: 353m<sup>2</sup>





## Costa del Sol, Nueva Andalucía

This stunning villa is located in the exclusive area of Nueva Andalucía, Marbella, Málaga, and stands out for its modern design and privileged location. With a constructed area of 844m<sup>2</sup> and a plot of 1.142m<sup>2</sup>, this property offers a spacious and comfortable living space, ideal for those looking for a sophisticated home on the Costa del Sol. It also boasts panoramic mountain and golf course views, making it a unique place to enjoy the tranquillity and natural surroundings. The villa has five bedrooms, all with en-suite bathrooms, ensuring privacy and comfort for its residents. The 491m<sup>2</sup> interior has been designed with high quality materials, including porcelain floors and double-glazed windows. The fully equipped kitchen is perfectly integrated into an open and functional space. Furthermore, the property is delivered fully furnished, ready to move into. The exterior of the villa is equally impressive, with a 353m<sup>2</sup> terrace that includes a covered barbecue area, ideal for outdoor gatherings. The garden and outdoor areas have been designed to maximise the enjoyment of the Mediterranean climate. The property also has a private garage, offering enough space for several vehicles. Located in an area close to renowned golf courses, this villa is within easy driving distance to Puerto Banús, Marbella Centro and Estepona. The area is known for its tranquillity and exclusivity, with easy access to amenities, restaurants and shops. This property represents a unique opportunity to acquire a luxury home in one of the most desirable areas of the Costa del Sol.



## Features:

### Features

Covered Terrace  
Ensuite Bathroom  
Double Glazing  
Barbeque

### Views

Mountain  
Golf

### Furniture

Fully Furnished

### Orientation

South East

### Setting

Close To Golf

### Parking

Private  
More Than One

### Climate Control

Air Conditioning

### Condition

Excellent