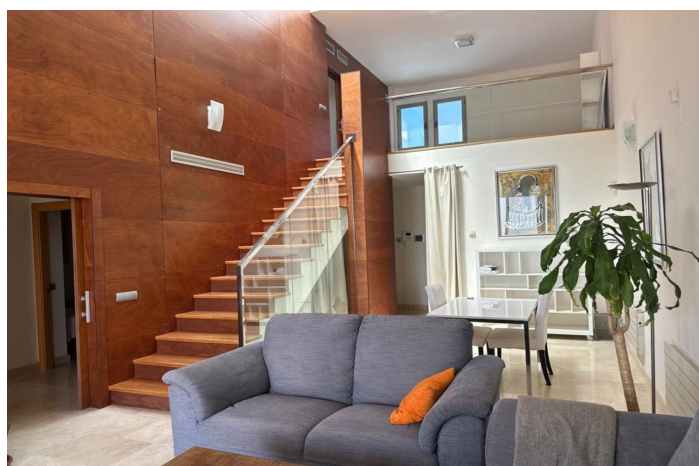




## Townhouse for sale in Benahavís, Benahavís

**795,000 €**

Reference: R4552708   Bedrooms: 4   Bathrooms: 3   Build Size: 315m<sup>2</sup>   Terrace: 40m<sup>2</sup>





## Costa del Sol, Benahavís

This luxury townhouse is located in the beautiful area of Benahavis. Situated on the mountainside, this modern property offers outstanding views down to the sea and the entire coastline. With a total built area of 312m<sup>2</sup> and 4 bedrooms, this townhouse provides ample space for comfortable living. The ground floor of the property features a spacious living/dining room with direct access to a covered terrace, where you can enjoy the breathtaking views. The fully fitted kitchen is equipped with modern appliances. There are two bedrooms on this level, both with en-suite bathrooms. On the upper floor, you will find a second living room, which can also be used as an office. This room leads to the master bedroom suite, which has its own private terrace. The master bedroom offers stunning open views. The lower floor of the property offers a large open plan space with a working fireplace. This versatile space can be used as a fourth bedroom or a second living room. There is also a bathroom on this level and access to the private garage, which has space for two cars. Marbella Views, is an exclusive community of only 8 properties. The communal gardens are beautifully maintained and provides a sunny space for sunbathing and relaxing. The communal swimming pool offers impressive views of the sea and the coastline. This luxury townhouse is fully furnished and features high-quality construction. The marble floors add a touch of elegance to the property. Other notable features include a guest room, alarm system, solarium, dining room, guest toilet, and fitted wardrobes. With its prime location close to golf courses and its modern architecture, this town house is the perfect choice for those seeking a luxurious and private lifestyle in Benahavis, Malaga.



Features:

Features

Covered Terrace  
Private Terrace  
Marble Flooring  
Fitted Wardrobes  
Solarium

Views

Sea  
Panoramic  
Garden  
Pool

Furniture

Fully Furnished

Security

Alarm System

Orientation

East

Setting

Close To Golf  
Frontline Golf

Kitchen

Partially Fitted

Parking

Private

Climate Control

Fireplace

Pool

Communal

Garden

Communal

Category

Golf