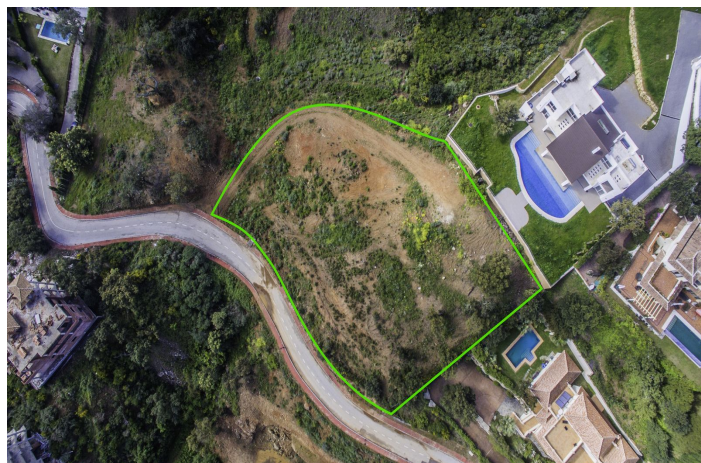




Frittliggende villa til salgs i La Mairena, Marbella

2 640 000 €

Referanse: R5026882 Soverom: 4 Bad: 4 Plottstørrelse: 3 719m² Bebygget areal: 392m² Terrasse: 230m²





Costa del Sol, La Mairena

Set within the lush, green hills of La Mairena just 7 minutes from Marbella's finest beaches, this stunning detached villa is the perfect blend of modern design, peaceful surroundings, and panoramic views. Boasting a generous 553m² of built space and set on an expansive elevated plot of 3,719m², this home is an ideal sanctuary for those seeking both privacy and sophistication. The villa is a contemporary masterpiece, offering bright and open interiors with clean lines and luxury finishes throughout. Its two-storey layout is flooded with natural light thanks to expansive floor-to-ceiling windows, which not only brighten every corner of the home but also frame breathtaking views of the Mediterranean Sea, the surrounding countryside, and the Sierra Blanca mountains. All four bedrooms are spacious, each with its own en-suite bathroom, ensuring privacy and comfort for both residents and guests. The master suite, in particular, offers spectacular views and direct access to a private terrace—perfect for enjoying tranquil mornings or romantic sunsets. Multiple outdoor terraces allow you to truly embrace the Andalusian lifestyle—ideal for entertaining, alfresco dining, or simply relaxing by the pool with a drink in hand. The villa's elevated position guarantees uninterrupted views and a constant sense of serenity. Included in the sale is a paid building license, offering potential for future expansion or personalisation of the property. Whether you're looking for a permanent residence, holiday retreat, or an investment with strong rental potential, this villa in La Mairena offers it all. A rare opportunity to own a designer home in one of Marbella's most natural and exclusive residential areas.



Egenskaper:

Funksjoner

Dekket terrasse

Privat terrasse

Lagerrom

Monterte garderober

Utsikt

Sjø

Panoramisk

Hage

Basseng

Privat

Parkering

Privat

Mer enn en

Orientering

Øst

Innstilling

I nærheten av butikker

Nær byen

Nær skoler

Hage

Privat

Energivurdering

B

Klimakontroll

Klimaanlegg

Betingelse

Nybygg

Sikkerhet

Alarmsystem

CO2 -utslippsvurdering

B