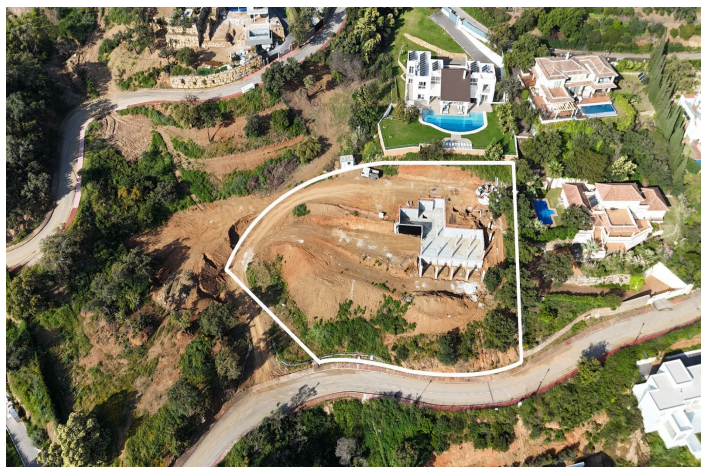




## Detached Villa for sale in La Mairena, Marbella

**2,640,000 €**

Reference: R3895192   Bedrooms: 4   Bathrooms: 4   Plot Size: 3,719m<sup>2</sup>   Build Size: 553m<sup>2</sup>   Terrace: 475m<sup>2</sup>





## Costa del Sol, La Mairena

Elegant Modern Villa with Panoramic Sea Views in La Mairena, Marbella Nestled in the hills of La Mairena on the Costa del Sol, this stunning contemporary villa offers a rare combination of architectural elegance, total privacy, and breathtaking natural surroundings. With sweeping views over the Mediterranean and surrounding mountains, the property provides a peaceful retreat just minutes from the heart of Marbella. Currently under construction, the villa is designed with clean lines, expansive glass walls, and open-plan living areas that maximize natural light and the spectacular scenery. Set on a generous plot of over 3,700 m<sup>2</sup>, the home boasts over 550 m<sup>2</sup> of built space plus 175 m<sup>2</sup> of terraces and a 300m<sup>2</sup> solarium – perfect for entertaining, relaxing, or simply enjoying the tranquility of the setting. Inside, you'll find a sleek, fully fitted kitchen, spacious living areas with a fireplace, and seamless indoor-outdoor flow. The property also includes features such as air conditioning, double glazing, a private garden, lift, solarium, and ample storage. Although you're surrounded by nature, the villa is just a short 7-minute drive to some of Marbella's finest beaches, and close to top golf courses, international schools, and amenities. Whether you're looking for a luxurious year-round residence or a peaceful holiday escape, this villa is a unique opportunity to own a slice of contemporary paradise in one of the Costa del Sol's most desirable areas.



## Features:

### Features

Covered Terrace  
Lift  
Private Terrace  
Storage Room  
Double Glazing  
Fitted Wardrobes  
Solarium  
Fiber Optic

### Views

Sea  
Mountain  
Panoramic  
Garden  
Golf  
Forest

### Pool

Private

### Garden

Private

### Orientation

East

### Setting

Close To Golf  
Close To Town  
Close To Schools  
Suburban  
Mountain Pueblo  
Close To Forest

### Furniture

Not Furnished

### Parking

Underground  
Garage  
Private  
More Than One

### Climate Control

Air Conditioning  
Pre Installed A/C  
Cold A/C  
Fireplace

### Condition

New Construction

### Kitchen

Fully Fitted

### Category

Off Plan