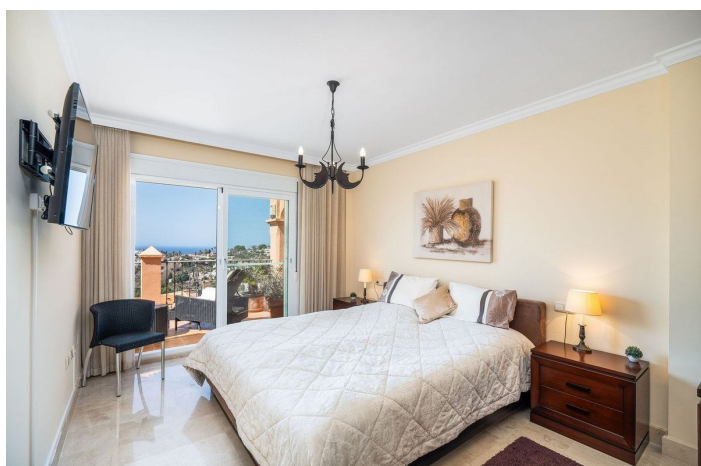




Penthouse for sale in Benalmádena, Benalmádena

895,000 €

Reference: R4637173 Bedrooms: 3 Bathrooms: 2 Build Size: 131m² Terrace: 107m²





Costa del Sol, Benalmádena

Stunning penthouse in Benalmádena - Situated in urbanization in the Torrequebrada area of Benalmadena. This apartment is located in a gated residential community, offering a luxurious and comfortable lifestyle for its residents.

With a spectacular southwest orientation, you can enjoy breathtaking panoramic views that stretch over the Mediterranean, mountains, gardens, and pools. Each day brings a picturesque new sight, with the sunset casting golden rays over the horizon.

Step into this luxurious residence, which immediately welcomes you with its sense of elegance and spaciousness. The house comprises of three bedrooms, all of which are equipped with spacious wardrobes, and two bathrooms. Each room offers a private and comfortable atmosphere.

The large kitchen-dining area is a perfect gathering spot for family and friends, where meals can be prepared and enjoyed in good company.

The residential community boasts three pools, inviting you to take refreshing dips under the warm rays of the sun. The gym is fully equipped with all the gear you need to exercise and train.

For your convenience, the apartment comes with two parking spaces and two storage rooms.

Whether you're into sunbathing by the pool, working out in the fitness center, or taking a leisurely stroll through the well-maintained gardens, this penthouse apartment offers an exclusive lifestyle in the heart of Costa del Sol. With its great location, impressive amenities, and breathtaking views, this is a great home.



Features:

Features

Covered Terrace
Lift
Private Terrace
Storage Room
Marble Flooring
Fitted Wardrobes
Gym

Sauna

Views

Sea
Mountain
Panoramic
Garden
Pool
Golf

Pool

Communal

Security

Alarm System
Entry Phone

Orientation

North

Setting

Beachside
Close To Golf
Close To Port
Close To Town
Close To Schools
Frontline Golf

Furniture

Fully Furnished
Optional

Parking

Private

Climate Control

Air Conditioning
Fireplace
Central Heating
U/F/H Bathrooms

Condition

Excellent

Garden

Communal

Category

Golf
Luxury