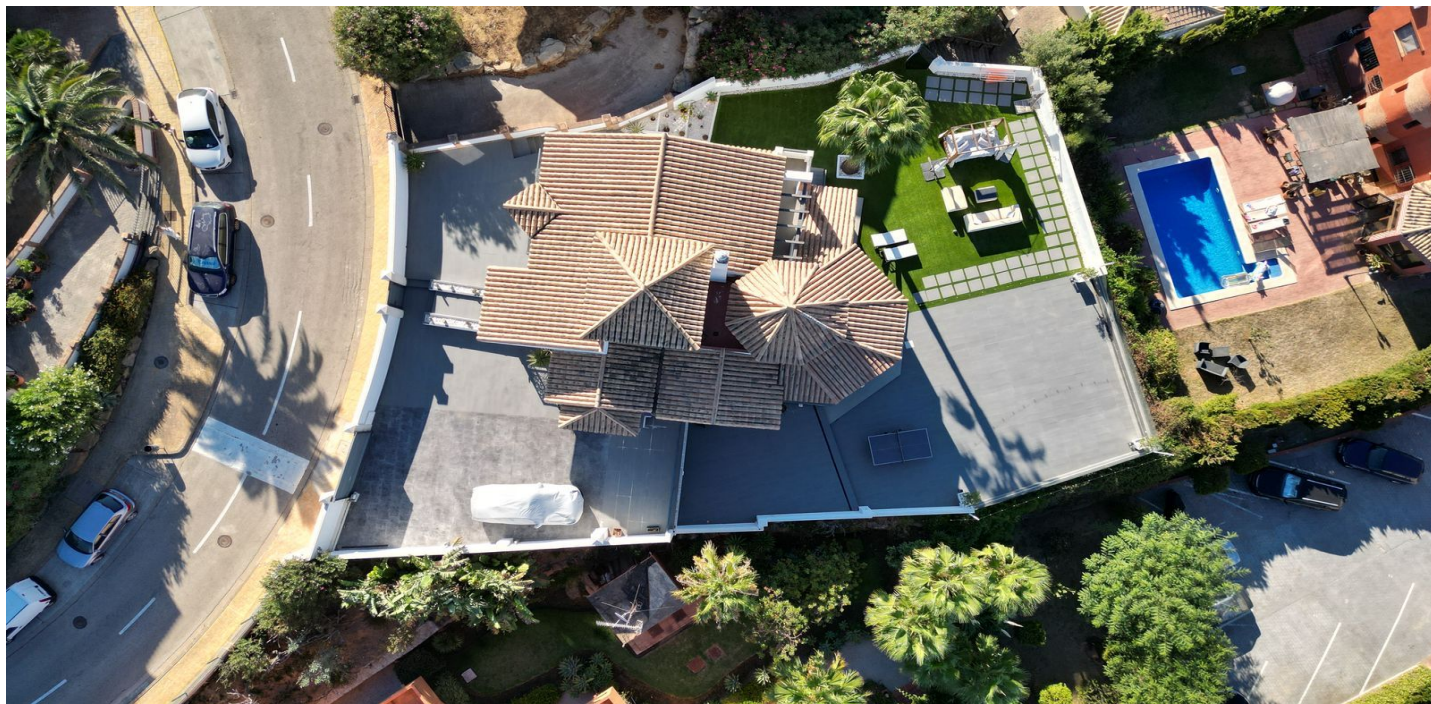




Detached Villa for sale in La Alcaidesa, San Roque

760,000 €

Reference: R4888501 Bedrooms: 4 Bathrooms: 5 Plot Size: 800m² Build Size: 292m² Terrace: 200m²





Costa de la Luz, La Alcaidesa

Villa on the seafront of La Alcaidesa. Its impressive views are focused on the La Alcaidesa Lighthouse, the sea and in the background the Rock of Gibraltar. Its almost 300 sqm are distributed over 4 floors. The entrance leads to a hall from which you enter a separate kitchen, a guest toilet and a living room with access to the terrace that offers the best views of the lighthouse and the sea. On the first floor there is a large bedroom of about 50 sqm with a dressing room, en-suite bathroom and its own terrace... The ground floor consists of 2 double bedrooms with a bathroom, one of which has direct access to the garden. The -1 floor has a splendid cinema room, with a screen and 6 large leather armchairs, a room that could easily be converted into a 4th bedroom. At the level of the garden, you finally access the wine cellar area, a large space with a kitchen, dining room, bar, toilet and pool table, the ideal place for meetings with friends and family. The garden, with artificial grass, offers the possibility of building a spacious pool of about 4x8 m2 and also has a porch with barbecue. The design of the house is elegant and modern, characterized by the luminosity in each and every one of its rooms. It is worth visiting, for its location, its perfect state of conservation and views. For dog lovers it is also the ideal place, not only is it located a few meters from the beach but there is very close, about 100 meters away, a landscaped park, with benches to walk and enjoy the views of this impressive coast.



Features:

Features

Covered Terrace
Private Terrace
Storage Room
Ensuite Bathroom
Fitted Wardrobes
WiFi
Games Room

Bar
Barbeque
Basement

Views

Sea
Panoramic
Garden
Golf
Beach

Pool

Communal

Utilities

Electricity
Drinkable Water
Telephone
Gas

Orientation

South

Climate Control

Pre Installed A/C

Setting

Close To Sea
Beachfront

Condition

Excellent

Garden

Private
Easy Maintenance

Parking

Private

Category

Beachfront
Golf
Contemporary